

# Glebe House



Friends Therapeutic Community Trust

**PUPIL PREMIUM STRATEGY**

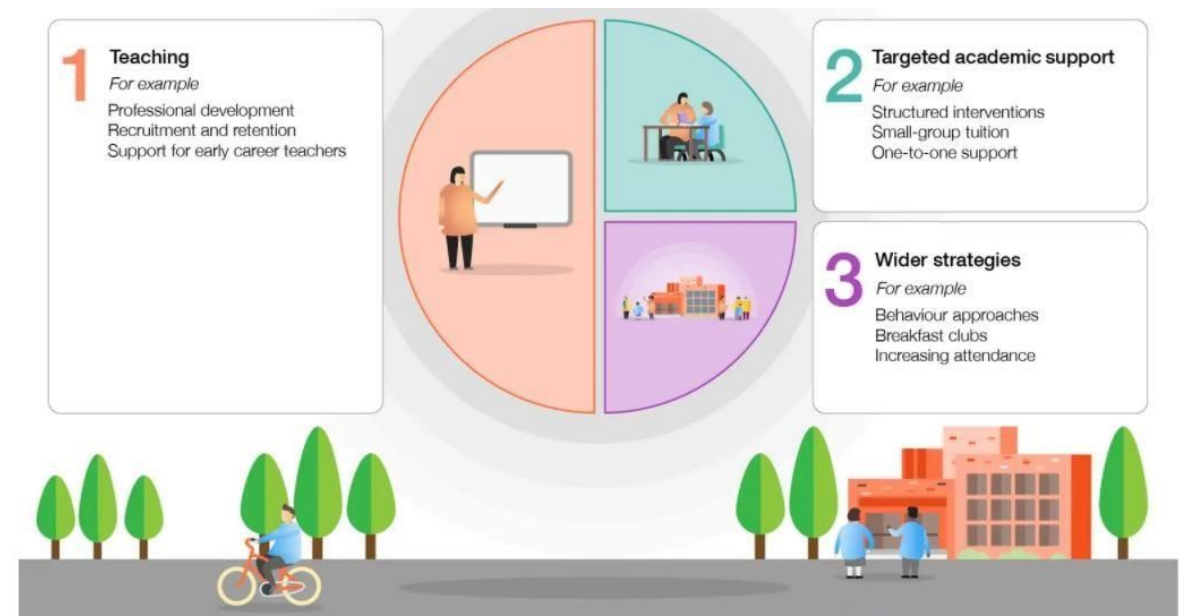
**SEPTEMBER 2023**

## Pupil Premium Strategy

Glebe House is a fee-paying school that does not get an automatic payment of pupil premium from the local authority. Glebe House school can have learners from any Local authority in the UK at any given time. The pupil premium funding rules differ with each authority.

Glebe House will work to secure pupil premium funding for all learners who are eligible. Some local authorities will link this funding to the successful completion of Personal Education Plan meetings and accompanying paperwork. Glebe House will ensure that these are completed in a timely manner and to at least 'good' level.

The Education Endowment Fund Guide to the Pupil Premium for schools published the following in June 2019 as effective Pupil premium strategies:



Most of these strategies are already built into the programme at Glebe House as a special school with SEMH learners. Most learners in most lessons are being taught 1:1. The curriculum they follow is personalised to their learning needs and personal ambitions and literacy and numeracy interventions occur as a matter of course. There is a wrap-around service to support learners with SEMH issues that draws expertise from the Care and Clinical Teams at Glebe House. Staff CPD is centred on increasing expertise within the group to deal with the specific learners admitted into the school. Glebe House will use the pupil premium money exclusively for the learner for whom it is allocated.

The spending could be linked to any of the following:

- Enrichment activities (informed by the Learning Conduct and Emotional LCE measures)
- Independent Study Projects (learners choose projects to work on during the extra-curricular time, the projects are facilitated by the teaching staff).
- Professional assessment e.g. educational psychologist assessment.
- Personalised learning resources e.g. learning software, hardware, musical instruments, specialist equipment for curriculum areas, toolkits for vocational subjects.

This statement will be reviewed by the Head of School on an annual basis.

Next review date: September 2024

## Pupil premium strategy statement

### School overview

Metric	Data
School name	Glebe House School
Pupils in school	5
Proportion of disadvantaged pupils	5
Pupil premium allocation this academic year	0
Academic year or years covered by statement	All
Publish date	<i>September 2023</i>
Review date	<i>September 2023</i>
Statement authorised by	<i>Janet Corr</i>
Pupil premium lead	Janet Corr

### Disadvantaged pupil barriers to success

Poor attendance.
Poor behaviour regulation
Poor literacy levels
Poor numeracy levels
Poor lifestyle habits (sleeping patterns and diet)

Learning disabilities - ASD, ODD, ADHD, etc...
Social Emotional Mental Health (SEMH) issues
Lack of aspiration
Adverse Childhood Experience (ACE)

**The form below will be completed for any pupil premium funding received for a learner at Glebe House:**

**Individual Pupil Premium Report**

**Learner details**

Metric	Data
Name	
Date of Birth	
Current age	
Pupil premium allocation this academic year	
Academic year	
Date of admission	

**Individual learner barriers to success**



## Strategy aims

Aim	Evidence of impact

## Targeted support

Measure	Activity	Spending
	Total spend	

## Monitoring and implementation

Area	Challenge	Mitigating action
Teaching		
Targeted support		
Wider strategies		

## Review: last year's aims and outcomes

Aim	Outcome

**Pupil Premium Lead** .....

September 2023 JR